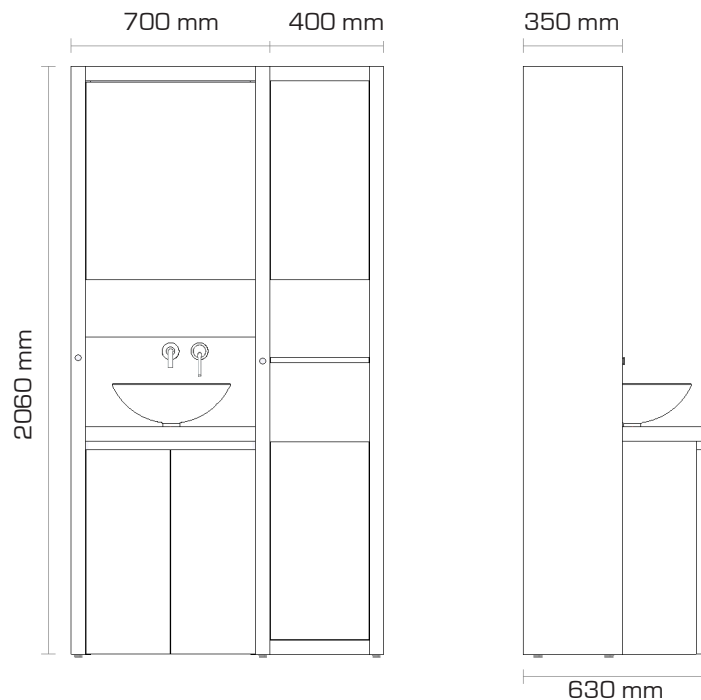


TECHNICAL DESCRIPTION B1M



Characteristics

Laminated top - original credenza with damp-proofing treated natural stone credenza and shelf - sanded glass sink 430 mm diametre without overflow - manual plug - removable shelf - recess for free standing washing machine - bathroom cabinet with front mirror and 2 glass removable shelves - 2 telescopic towel rails, 2 integrated multi-Led lighting systems with switch and socket - reversible cupboard with 2 doors, 3 shelves of which 2 are removable - delivered articles pre-assembled with U-bend and other hardware.

Equipment

Extra: free standing washing machine - recycler bin.

Ecological commitment

Wood used resulting from certified forests PEFC - range of eco-labelled paints with low content in COV - ecological household electrical appliances classified A or A + - mixer taps reducing the flow without hindering efficiency - selector rubbish bins

Colours 2010/2011

Clear oak, dark oak; other colours or finishes on inquiry

Information & orders

T + 04 71 08 82 67

F + 04 71 08 81 34

W kitchoo.com

We are constantly looking at improving the quality of our products, we reserve the right to modify, at any time, the characteristics. Certain equipment is not marketed in all countries in which we do business. Kitchoo is a registered trademark. All rights reserved - © copyright Kitchoo [Switzerland] limited company - 2010/01